



# Pygmy Goat Anatomy

M W C S D G C M O W

X Q Q A G A O O N A A Q E C W H I H J O S Z R R R O S E O U  
 P O L E F D E O L E S T C L Q U D P B I F W O S E L O U X Q  
 I Y J T P H V E R F D A Y T Z V L W S N X R P Z I Q E S L L  
 I R Q F C A V Q U N N X L Q M Z R N E K L I S F P D S S I M  
 H L W T L B S F X N L E R R A B U E L G M T Z F T X Y H R Z  
 F C U Q Q A F T O O H Y Z M Z M P M F I X A L N C Z P U L J  
 B S W I Z X N N E Q M J O S I W C Z U Z R R M T K P M W O H  
 E N G S R X Q K H R Y J T P H C Q Y T R U Y K D T P U I T W  
 D W K E U K O T D H N D N T Z R I J S H K E S Q I D N T U Q  
 Z U M V T P Z A M Z L A O M X A R X T N H U P U C J R H E K  
 Q A T L K H S P B K J U E A X G W Z W E Y O M P I S E E P D  
 J W R I P Y M D B I D B V L Q E G M G L C J O S Y K T R Z S  
 T V E A M Y H J O O C G B U D Z N N M R D C D F H B S S P F  
 O Z Y Y B O B H H O M E Q R W A G O O Q Y K U L H X O Q D W  
 N E L F Y Q X M K U D E W C L A W W B G I L E Y F H R L Z W  
 F B A E H F S A I V F R Y B C J N I Z I U Q I T M C P T M T  
 L I A T E C W K A G M M G V P D S J N C X T Q B H X K M C M  
 R P E I I R G M Z O J D E K P L S S Y N E Q S Z S J S P G A  
 F A R R P U D D E R E N I H C D P L Y H Y H D A F L T V U U

BARREL

BONE

CANNON

CHINE

CROPS

CROWN

DEWCLAW

ESUTCHEON

FLANK

HOOF

LOIN

MUZZLE

PASTERN

PIN

POLE

PROSTERNUM

REAR

RUMP

STUFLE

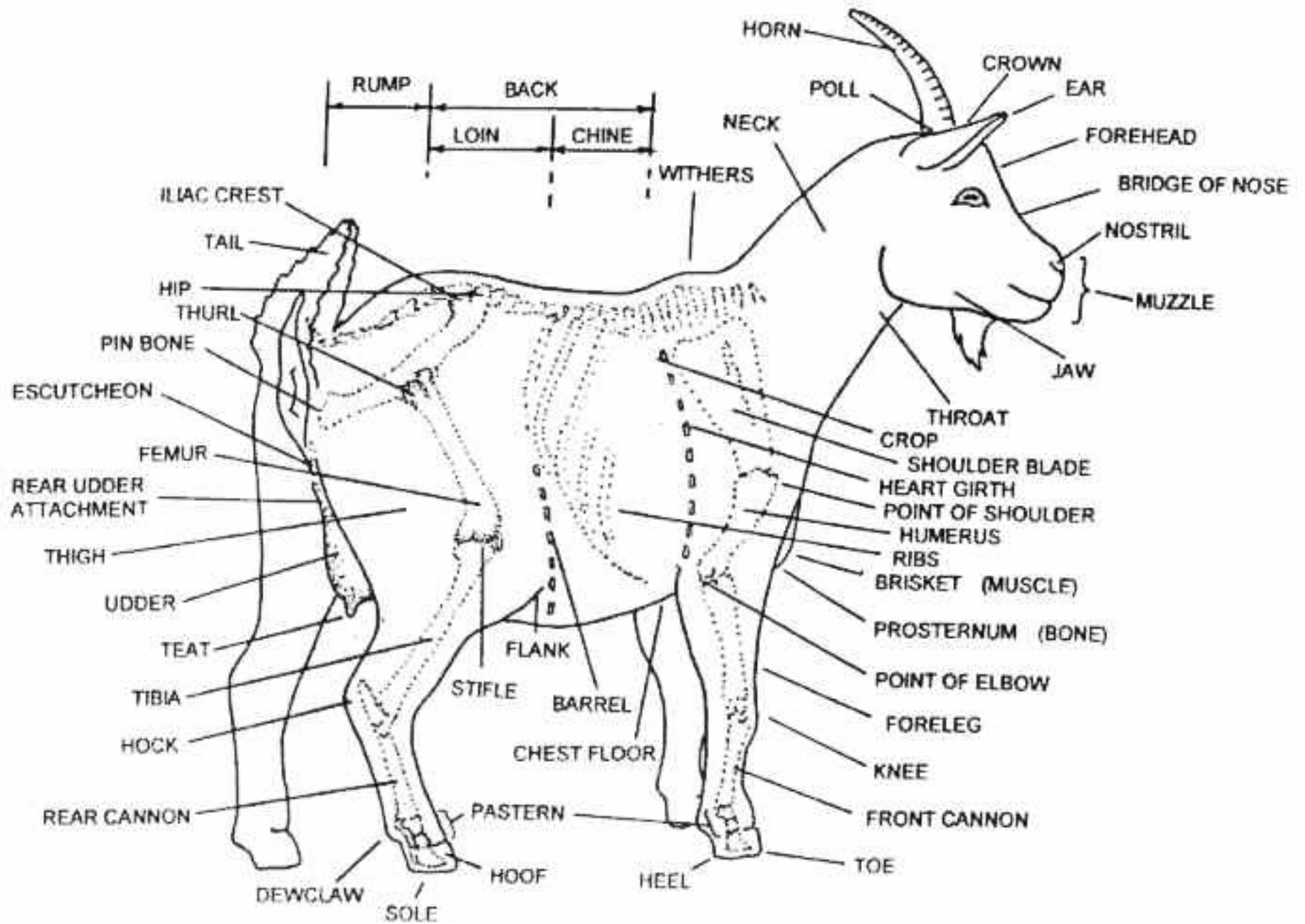
TAIL

TEAT

THURL

UDDER

WITHERS



Pygmy Goat Parts